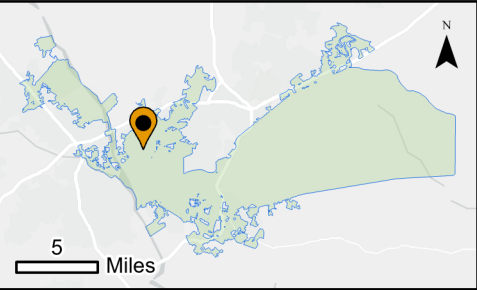






Seminary Ridge Neighborhood Association





 Neighborhood Location (Above)


 Neighborhood

 Parcels

 Streets


 Railway Tracks

 City Limits

 City of Columbia Parks

0.1

Miles




This map was prepared by:

City of Columbia – GIS Division

GIS@columbiasc.gov

<https://gis.columbiasc.gov>



Wednesday, April 12, 2023

Esri Community Maps Contributors, © OpenStreetMap, Microsoft, Esri, HERE, Garmin, SafeGraph, GeoTechnologies, Inc, METI/NASA, USGS, EPA, NPS, US Census Bureau, USDA, Esri, HERE, Garmin, SafeGraph, FAO, METI/ NASA, USGS, EPA, NPS

**CITY OF COLUMBIA GIS DATA
DISCLAIMER**

The map or data provided is for information only and the City of Columbia makes no representations as to its accuracy. Its use without field verification is at the sole risk of the user. This data is not for resale. This data should not be presented under false ownership and should contain the City of Columbia watermark and seal. The user of this map or data agrees by accepting this content to hold the City of Columbia and all its assignees harmless for any occurrence stemming from the use or affects of this information, maps or data. Any products produced with the data must be shared with the City of Columbia.